

Figure 1 . Ash content of 110 individual bales (11 lots of 10 bales each) from northern NY. Each set of 10 is an individual lot (1-10, 11-20, etc.). Everything above the horizontal line at 8% ash is likely influenced by soil contamination.

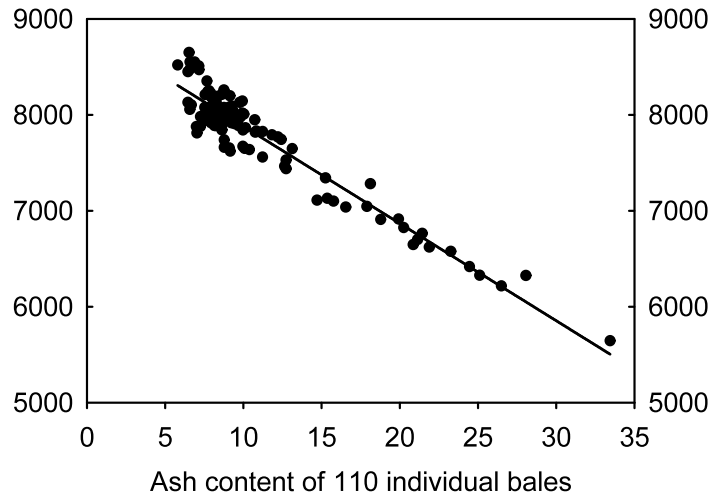


Figure 2. Ash and BTU content of 110 individual bales (11 lots of hay) from northern NY. The correlation between ash and BTU is -0.95.

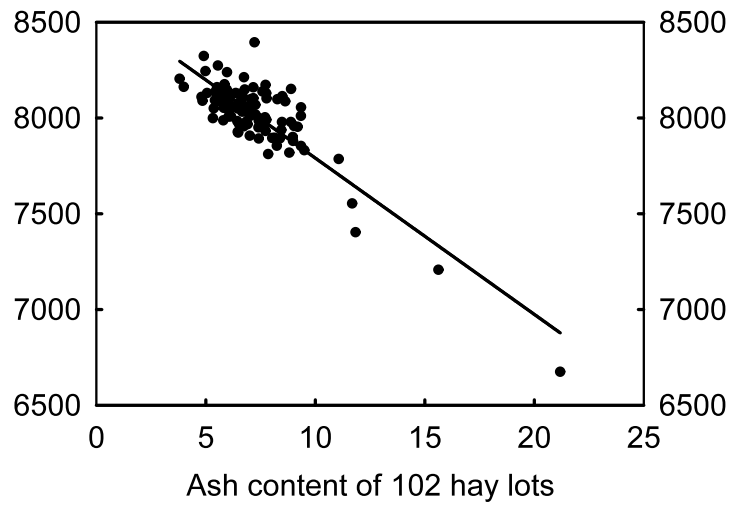


Figure 3. Ash and BTU content of 102 lots of hay from northern NY. The correlation between ash and BTU is -0.86.

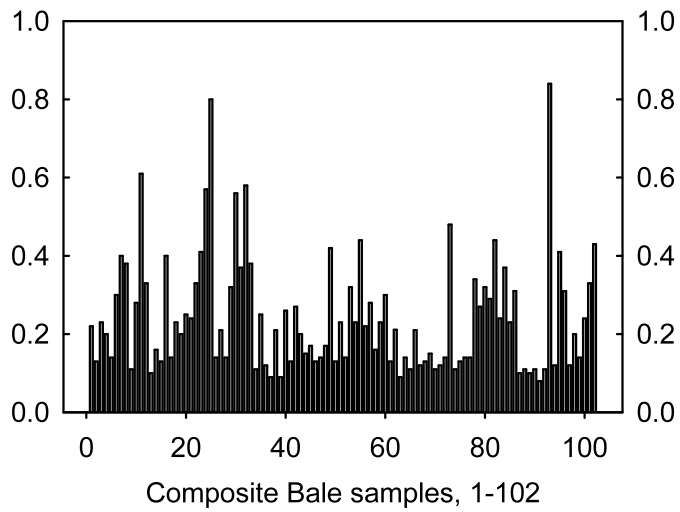


Figure 4. Chloride content of 102 bale lots in northern NY.

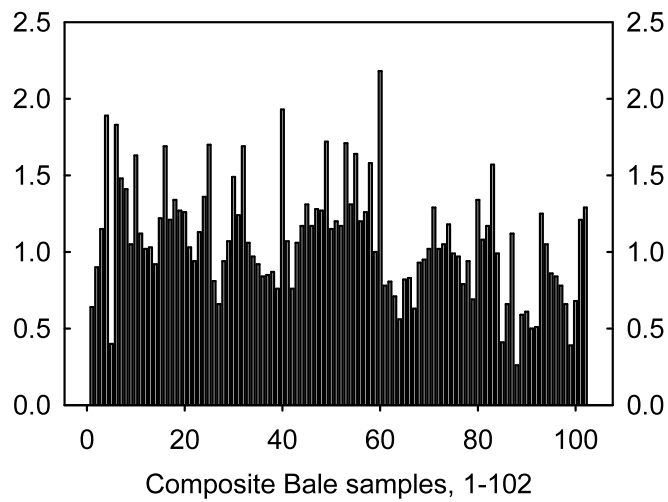


Figure 5. Potassium content of 102 lots of hay.

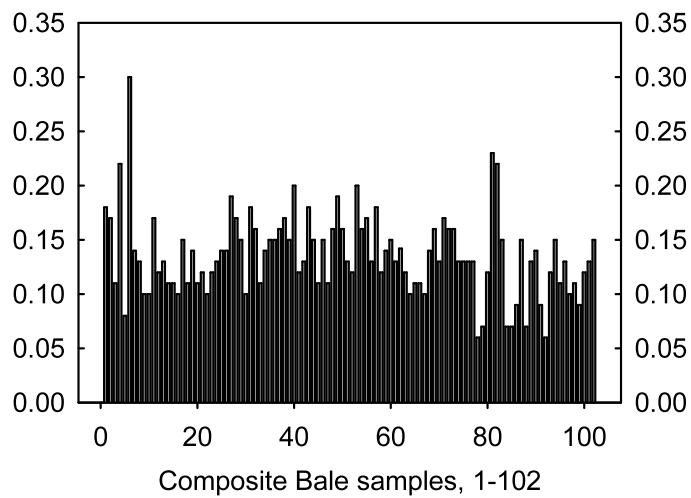


Figure 6. Sulfur content of 102 lots of hay.

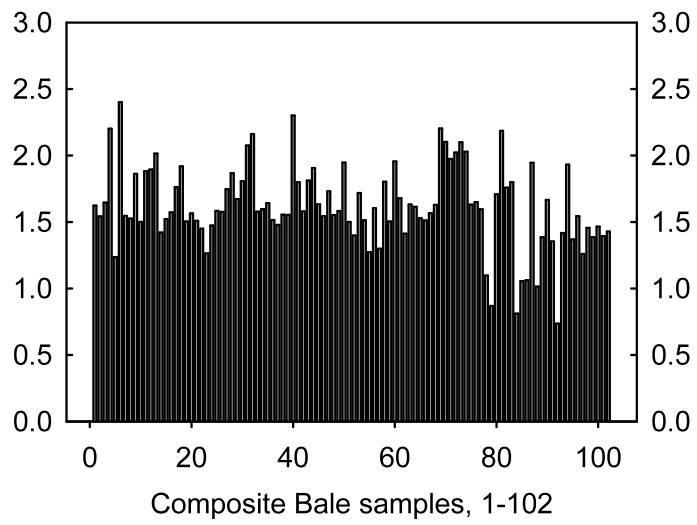


Figure 7. N content of 102 lots of hay.

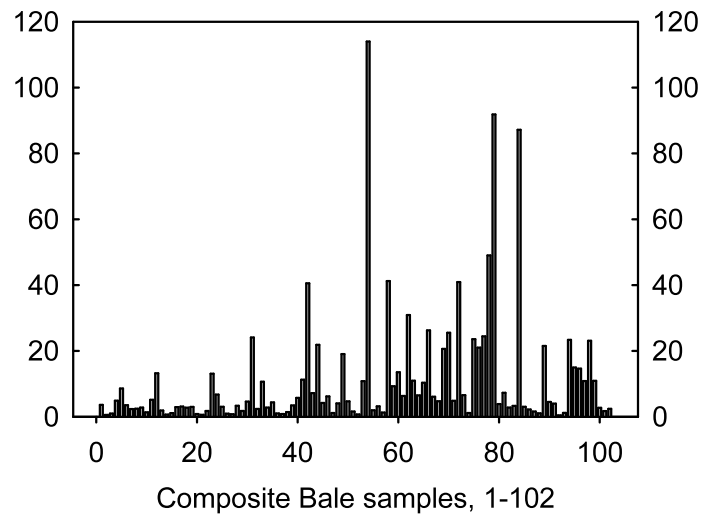


Figure 8. Titanium content of 102 lots of hay.

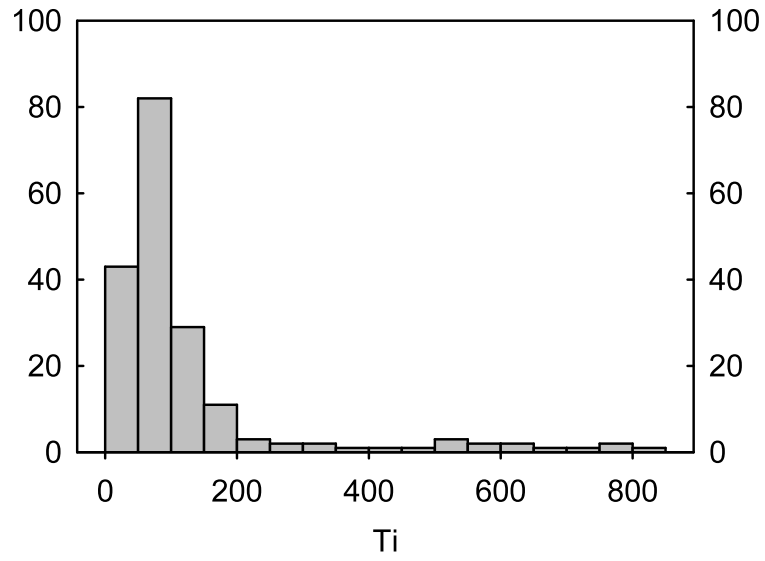


Figure 9. Range in Titanium extracted from 187 representative soils, using a standard plant extraction procedure. Histogram showing the distribution, with the number of soils having 0-50 ppm, 50-100 ppm, etc.